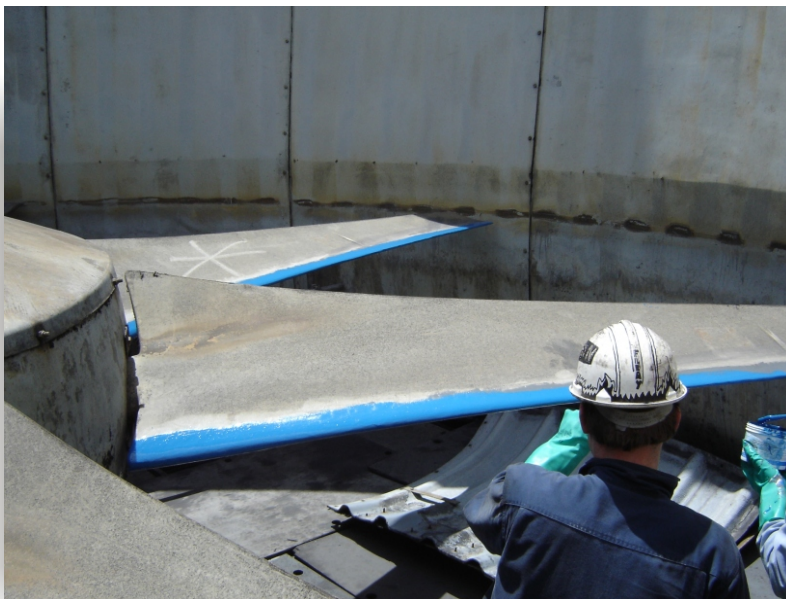
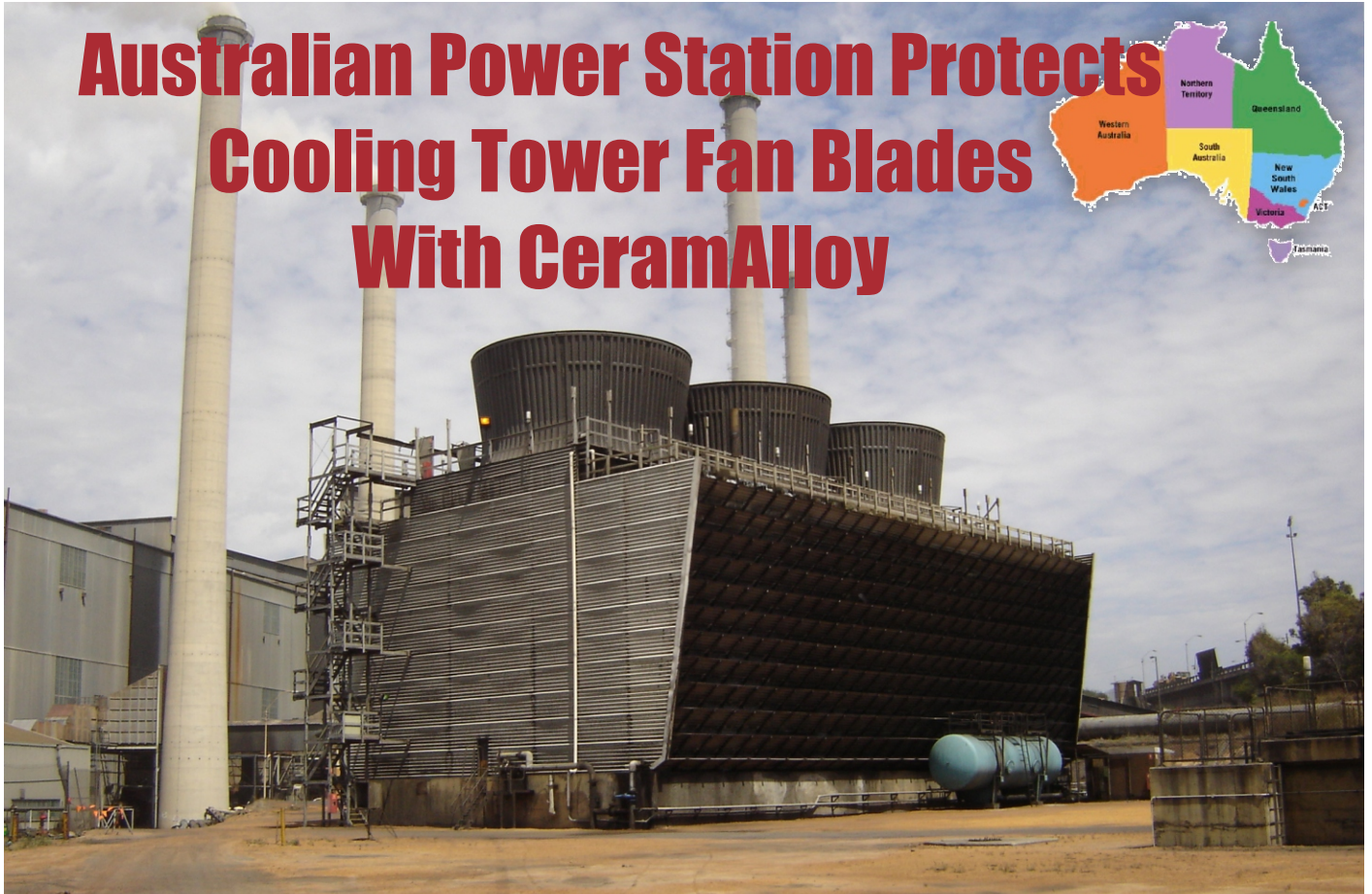


## Australian Power Station Protects Cooling Tower Fan Blades With CeramAlloy



This coal fired power station located in Western Australia was experiencing erosion on their fiberglass cooling tower fan blades. The ash in the air was causing accelerated wear on the leading edges.

Matt Kenna, ENECON's exclusive distributor in Australia,

recommended CeramAlloy CL+(AC) to coat and protect these blades. CeramAlloy bonds very well to fiberglass and exhibits outstanding erosion resistance in this environment.

This was a very simple – yet, very effective– solution to what was a very serious concern for the power plant's maintenance engineers.

700 Hicksville Road • ENECON Center Suite 110 • Bethpage, New York 11714  
Toll Free: 888-4-ENECON • Phone: 516.349.0022 • Fax: 516.349.5522  
Website: [www.enecon.com](http://www.enecon.com) • Email: [info@enecon.com](mailto:info@enecon.com)