

ENESEAL CR & HR Rescue Port Authority Roof in the Philippines

This metal roof of an administration building in a local Port Authority in the Philippines had deteriorated severely due to the harsh marine environment. The foam insulation material that had been applied only 4 years ago was in very poor shape.

The Port Authority facilities engineers wanted to recondition the roof, provide corrosion protection to the metal, repair any corrosion damage and provide a

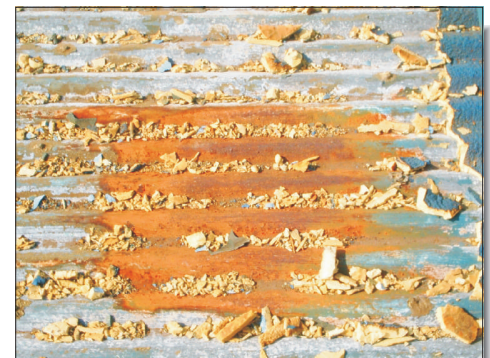
heat refractive surface to reduce the heat load in the building.

After considering a number of options, they decided on an ENESEAL Metal Roof Restoration System.

After stripping off the foam insulation, the entire roof was then pressure washed and inspected for holes in the metal structure. These were repaired with DurAlloy and reinforcement tape or

metal patches secured with DurAlloy. Any open seams were caulked and sealed.

ENESEAL CR (tinted blue) was then applied over the entire roof area to provide long-term corrosion protection followed by **ENESEAL HR** (also tinted blue) to provide a heat refractive surface. **Problem solved - quickly and cost effectively!**



6 Platinum Court • Medford, NY 11763
Toll Free: 888-4-ENECON • Phone: 516-349-0022 • Fax: 516-349-5522
www.enecon.com • info@enecon.com