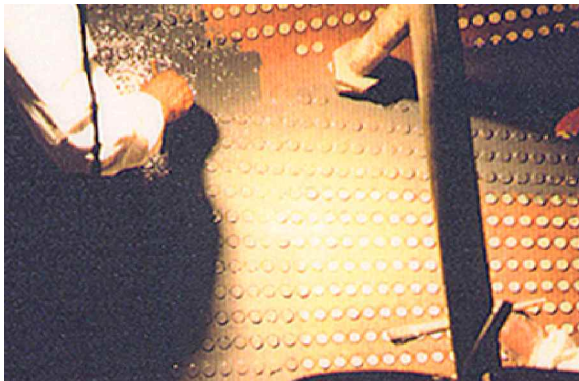




Engineers inspect one of the massive waterboxes at the power station.

California Utility Repairs & Protects 8 Waterboxes & Tubesheets on Main Steam Condensers...



The first coat of CeramAlloy CL+ (Gray) being applied to one of the tubesheets.



Final coat of CeramAlloy CL+ (Blue) applied to all wet surfaces to provide years of erosion/corrosion protection to the condensers.

\$250,000 of ENECON CeramAlloy Saves Millions of Dollars Over Conventional Repair and Replacement Costs!

The ENECON Engineering Team in Southern California, supervised the installation of a quarter-million dollars worth of CeramAlloy CP+ and CL+ to rebuild and resurface 8 waterboxes and tubesheets at a power station near Los Angeles.

ENECON CeramAlloy was selected because of its outstanding adhesion, its very low moisture permeability, and its exceptional tolerance to “cold wall” effects.

700 Hicksville Road • ENECON Center Suite 110 • Bethpage, New York 11714
Toll Free: 888-4-ENECON • Phone: 516.349.0022 • Fax: 516.349.5522
Website: www.enecon.com • Email: info@enecon.com